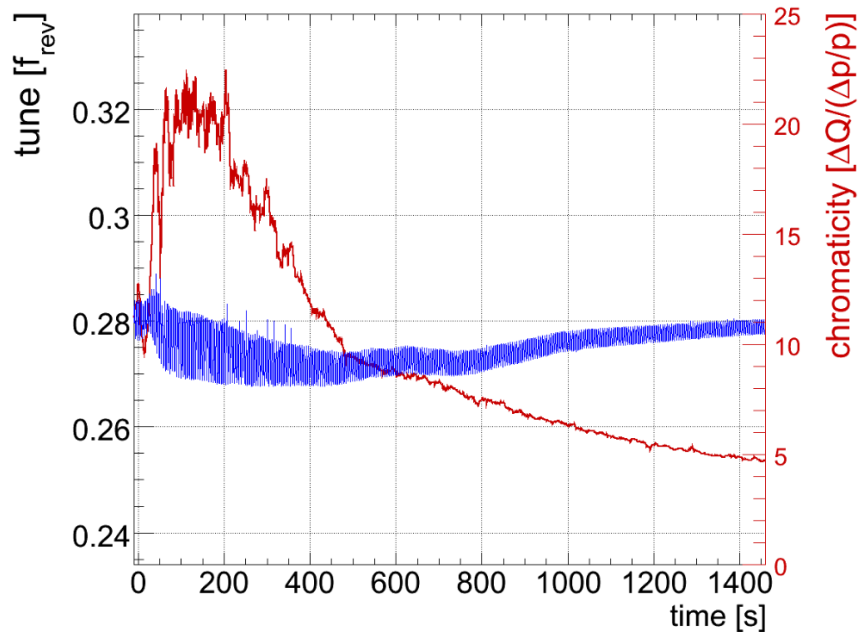


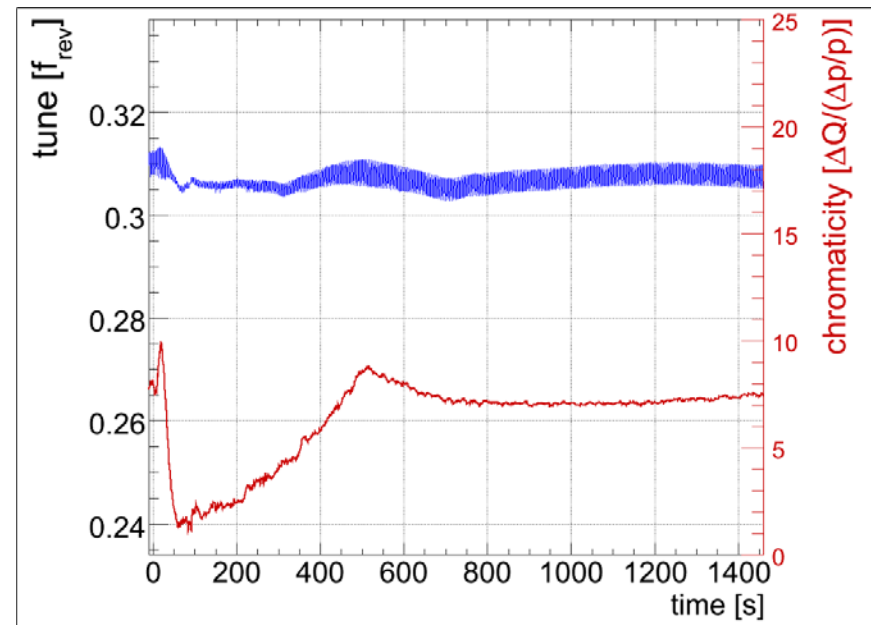
Friday 4 June

- Chromaticity measurements during the ramp only partly successful (continuous tune measurement stopped working during the ramp) - Data analysed by Ralph Steinhagen.

• Hor.



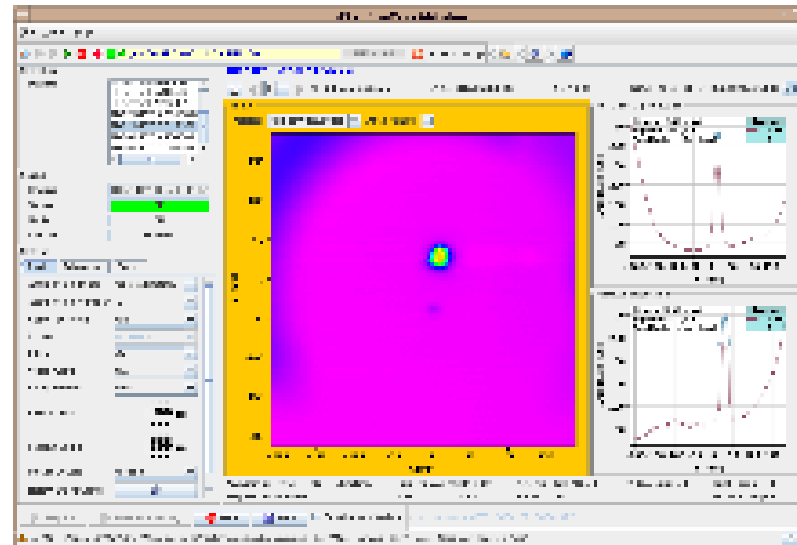
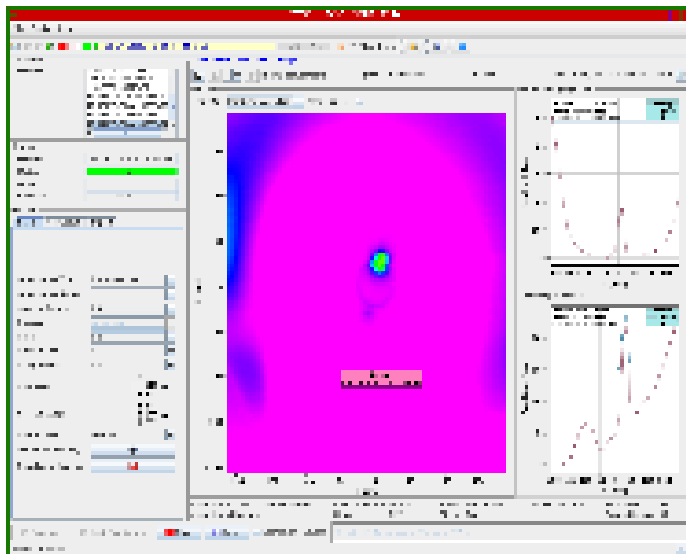
Vert.



- Correction applied to the beginning of the ramp

Friday 4 June

- 09:00 Problem with the incorporation of the trims in the squeeze → decided to dump and prepare for injection
- Dump check at 3.5 TeV (beam position on BTVDD is fine - Jan Uythoven).





Friday 4 June

- Problems with the publication of the beam mode in the telegram
 - 11:30-13:30 No beam from PS-Booster
 - 15:30 : Ready to inject INDIV 1e11
 - 16:00 - 20:30 : Protection systems:
 - Loss maps measurements done : settings validated for stable beams
 - Asynchronous beam dump with 1e11
 - In the shadow, some transverse damper commissioning with high intensity was done
-



Friday 4 to Saturday 5 June

- 20:30 - 22:30: Pre-cycling of all sectors
 - 22:45 - 03:00 : QPS problem - quench heaters of MB.A24L5 was discharging. Access needed, QHPS changed but the spare had a faulty switch that had to be repaired
 - 03:00 - 4:30: Pre-cycle
 - 05:00 : Beam set-up with pilot: tunes were superposed and very close to $1/3$ resonance. Corrected together with chroma and tunes and injection oscillations.
 - 06:30: Injected all 13 bunches
-



Saturday 5 June

- Ready to ramp but problems with trim incorporation
- Lost beam 2 in the process of debugging the incorporation problem (linked to tune change)
- Presently Re-injecting

WEEK END

- Physics fills - 13b x 13b of 2.3×10^{10} /bunches
 - Transverse feedback commissioning on Sunday
-