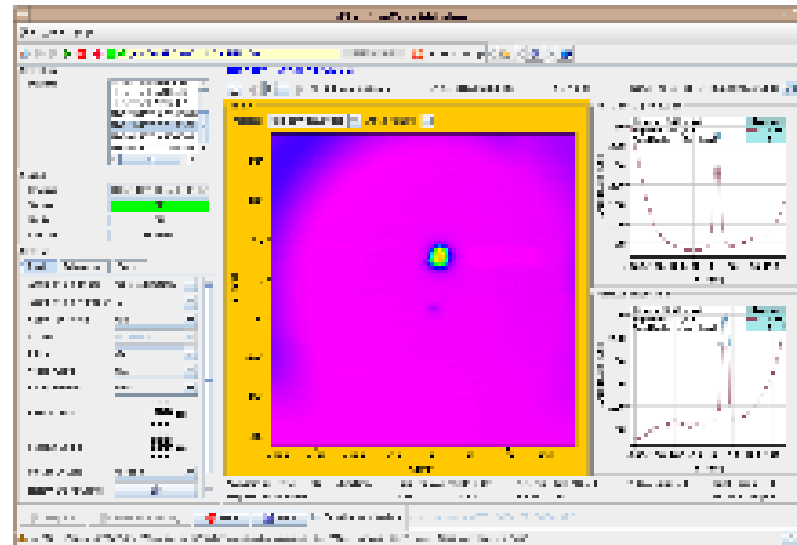
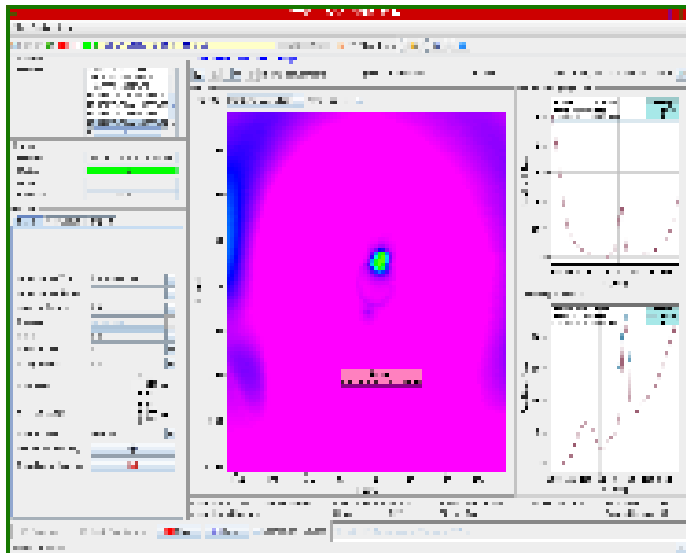


Friday 4 June

- Chromaticity measurements only partly successful (continuous tune measurement stopped working during the ramp)
- 09:00 Problem with the incorporation of the trims in the squeeze → decided to dump and prepare for injection
- Dump check at 3.5 TeV OK (Jan).





Friday 4 June

- Problems with the publication of the beam mode in the telegram → disappeared mysteriously
 - Finally ready to inject at ~11:30 but no beam from PS-Booster
 - IQC updating MKI thresholds - old and new values copied in elog for reference.
MKI checks are now active again in IQC (unmasked) - Bren
 - 15:30 : Ready to inject INDIV 1e11
 - 16:00 : loss maps measurements
 - When loss map measurements done, perform an asynchronous beam dump with 1e11
 - Then start preparing physics fills, 13b x 13b of 2.3e10 /bunches
-

- 
- Physics fills
 - Possibly transverse feedback commissioning on Sunday afternoon
-