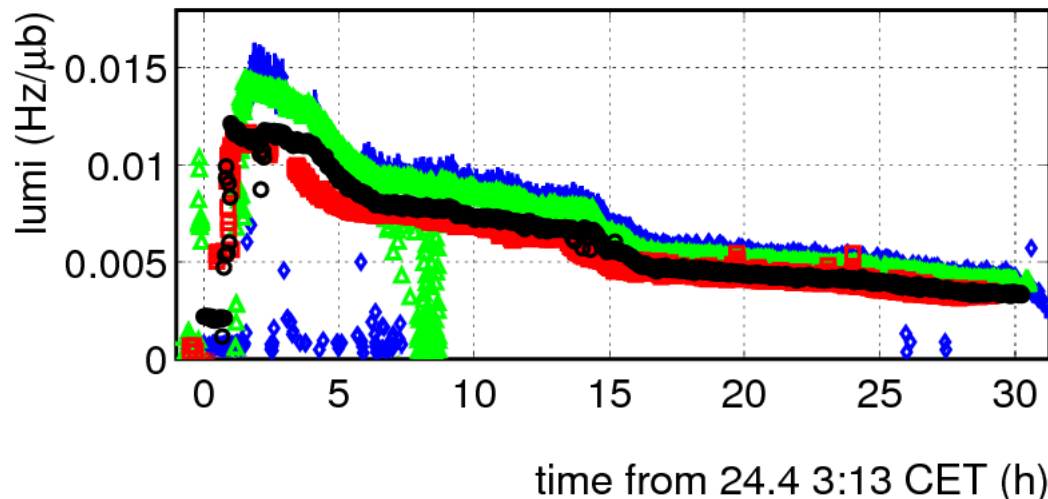


# Fill 1058

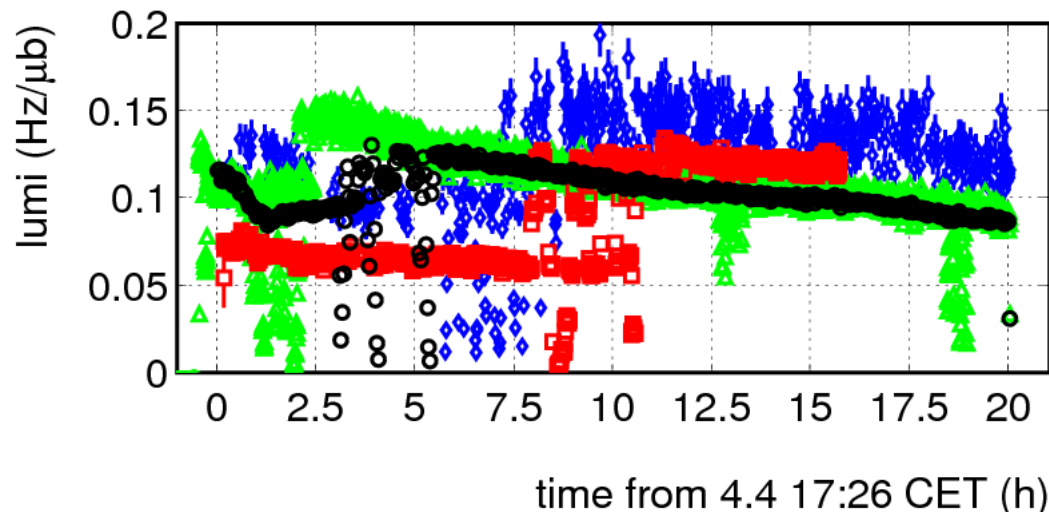
- First physics fill with  $b^* = 2\text{m}$  in all IPs
- 3 bunches on 3 bunches (2 collisions per IP)

IP1 (ATLAS)  
IP2 (ALICE)  
IP5 (CMS)  
IP8 (LHCb)

## LUMI 1058 PRELIMINARY



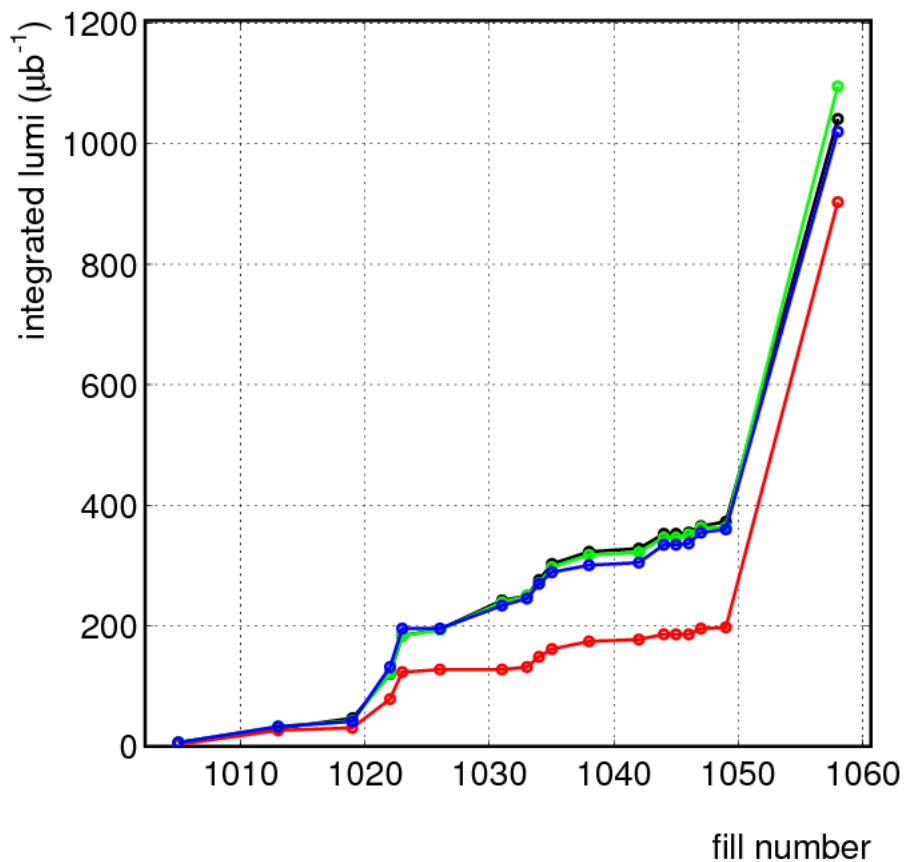
## LUMI 1022 PRELIMINARY



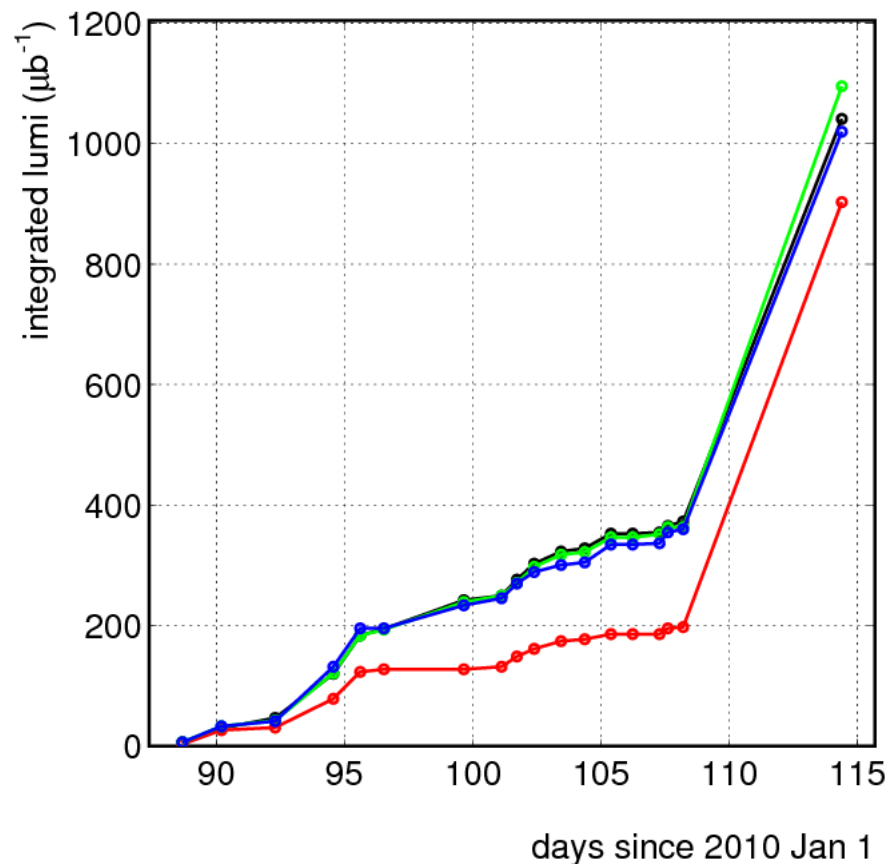
# Integrated lumi (delivered, in STABLE BEAMS)

(modulo some possible luminometers down time...)

LHC 2010 RUN



LHC 2010 RUN



PRELIMINARY